

# THE SMARTci SYSTEM



ADVANCED ARCHITECTURAL PRODUCTS

## What is SMARTci?

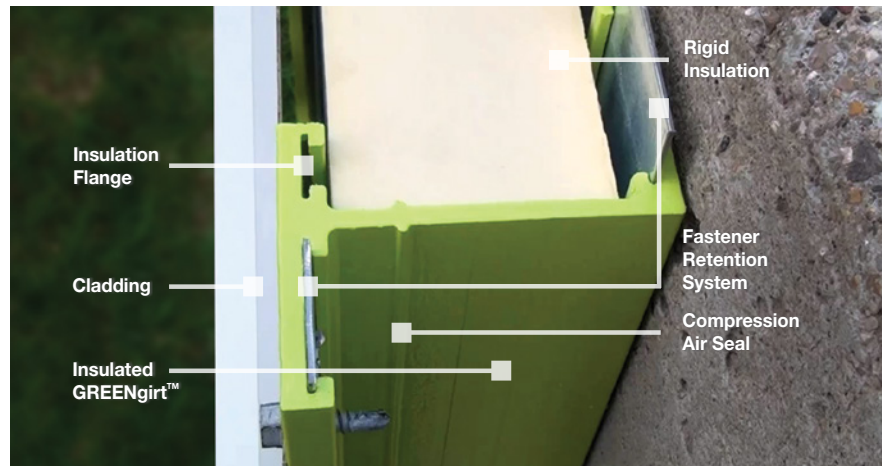
SMARTci is an innovative, complete insulation solution. Engineered as a continuous insulation system, SMARTci includes composite girt/attachment members (called GreenGirt™), insulation, an engineered installation package, and optional accessories.

GreenGirt™ joins the building cladding and insulation to a building structure. It's an insulated composite sub-framing component inside the SMARTci assembly.

**ENVIRONMENTALLY FRIENDLY:** Yes. SMARTci is a recyclable building life product that will help in LEED certification. It creates significant energy savings and reduced carbon emissions. GreenGirt™ uses naturally sourced bioresin and recycled glass materials.

**UTILIZING PROVEN TECHNOLOGY:** SMARTci has been field-tested via finite element analysis with ASTM and UL agencies. All components and materials in the SMARTci System have been rigorously tested and proven in the construction industry.

**SMARTci IS BETTER THAN STEEL:** It is superior to steel structurally and thermally. GreenGirt™ is designed to provide the same loading capabilities of a Z girt of equivalent depth. Regular metal girts and through-fasteners create thermal bridging in the insulation system, but GreenGirt™ eliminates these. Furthermore, GreenGirt™ is not susceptible to moisture, corrosion or electrochemical reactions.

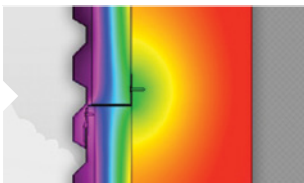


## How is SMARTci different from other CI systems?

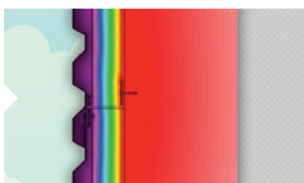
- It has zero thermal short fasteners
- It creates zero cold spots for condensation
- It is a universal attachment system for various claddings
- It can be used over multiple surfaces — not just stud walls
- It has fewer parts than other systems, allowing for quick installation
- It enables use of thick rigid foam exterior up to 4 inches
- Has it been fire tested? Yes. GreenGirts have ASTM E84 Class A ratings, UL94 V0 and is compliant with NFPA 285 requirements.
- Environmentally Friendly
- Leed credit potential

Masonry Wall

**Conventional System:**  
Fasteners and Framing Contribute to Energy Loss



**SMARTci System:**  
Minimizing the Thermal Impact of Fasteners and Framing



## The Problem: Thermal Bridging

When metal is used to connect the exterior components of a building directly to the interior framing, this causes a thermal bridge. This thermal path of least resistance allows heat (or cold) to escape, creating a vulnerability for cold spots and allowing moisture problems. Using materials that eliminate the thermal bridge help avoid unnecessary heating and cooling costs.

## The Solution: SMARTci

SMARTci was designed to address the inadequacies of other continuous insulation solutions. It's individual parts were created as a simple, complete solution to help you create smarter buildings. Plus, it's the best assembly to help you earn points toward LEED certification. Unlike other attachment systems, SMARTci completely prevents thermal bridging that are created by metal fasteners and framing. It doesn't create cold spots for condensation inside your walls. It has a universal attachment design for virtually any cladding, and it can be used over multiple surfaces — not just stud walls.

\* U.S. and Global Patents Pending

Why SMARTci

Universal attachment design for virtually any cladding

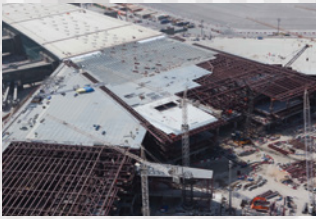


SMARTER BY DESIGN. PROVEN BY PERFORMANCE.

Advanced Architectural Products  
**SMARTci Systems**  
 959 Industrial Drive  
 Allegan, MI 49010  
 269-355-1818  
[www.smartcisystems.com](http://www.smartcisystems.com)



**We've got you covered** - anywhere in the world



SMARTci Systems have been implemented around the globe in airports, office buildings, and institutional buildings. Its individual parts were created as a simple, complete solution to help you design smarter buildings SMARTci, featuring the patent pending GreenGirt™, a composite girt/attachment member system, is unlike other attachment systems, SMARTci has zero thermal short fasteners. It doesn't create cold spots for condensation inside your walls. Plus, it's the best assembly to help you earn points towards LEED certification. It has universal attachment design for virtually any cladding, and it can be used over multiple surfaces — not just stud walls.

SMARTci can work with system designers to determine the actual wall assembly values and optimum construction. All SMARTci insulation system R values are determined via ASTM c236 Guarded Hot Box methodology and 3D finite element analysis modeling. All SMARTci insulation systems are designed and engineered to insure optimum performance and energy savings.



**Airport**



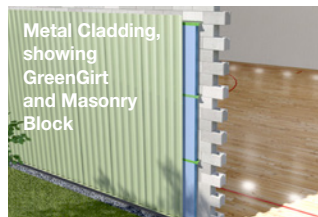
**Office**



**Institutional**

### SMARTci Worldwide

The SMARTci System is utilized internationally. No project or design is too big or too small. SMARTci is designed to be adaptable to your requirements regardless of design, country, region, or climate. We understand that every project is custom in design and has a unique set of specifications.



Metal Cladding, Showing GreenGirt and Masonry Block



**Brick**



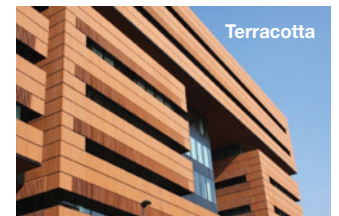
**Metal Roof**



**Metal**



**Wood**



**Terracotta**

**Universal attachment design for virtually any cladding**

**SMARTci™**

SMARTER BY DESIGN. PROVEN BY PERFORMANCE.

www.smartcisystems.com | 269.355.1818

**Advanced Architectural Products  
SMARTci Systems**

959 Industrial Drive  
Allegan, MI 49010  
269-355-1818



See the differences here at our web site: [www.smartcisystems.com](http://www.smartcisystems.com)

FLG1-201-0513