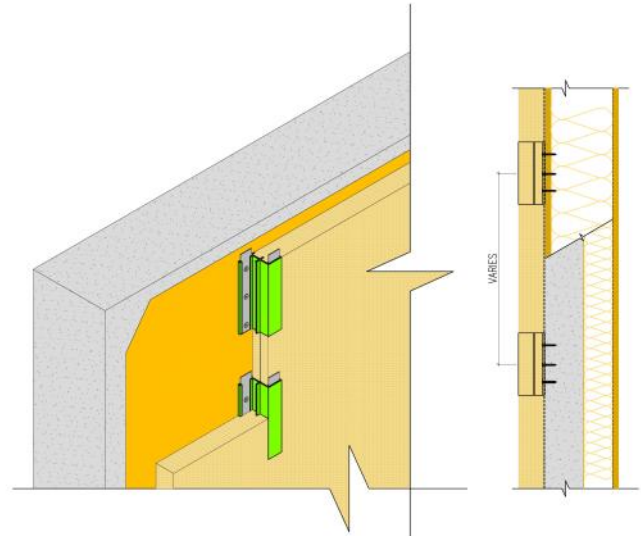


GREENgirt™ Clips

This system includes our insulated fiberglass-reinforced plastic (FRP) GREENgirt Clips as sub-furring, to house the CI and provide cladding attachment support. The Clips are installed vertically in a pre-determined grid layout, and connected with horizontal metal sub-furring (by others); this layout must be verified by A2P. The system must be used with a customer-provided weather-resistive barrier (WRB) and mineral wool / spray foam insulation.

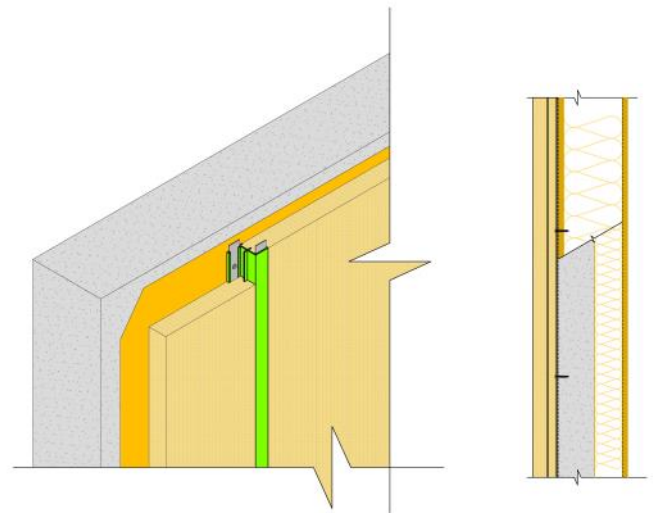
INCLUDED ITEMS: GREENgirt Clips, Product Data, Installation Literature, Cladding Review. **EXCLUDED ITEMS*:** Insulation, Metal Sub-Furring, Shop Drawings, MTO, Fasteners, Accessories, Sealed Engineering Calculations*



GREENgirt™

This system includes our continuous, insulated fiberglass-reinforced plastic (FRP) GREENgirt as sub-furring to house the CI and provide cladding attachment support. They are installed horizontally / vertically and can be used with additional metal sub-furring. The system must be used with a customer-provided weather-resistive barrier (WRB) and mineral wool / spray foam insulation. **INCLUDED ITEMS:**

GREENgirt, Product Data, Installation Literature, Cladding Review. **EXCLUDED ITEMS*:** Insulation, Metal Sub-Furring, Shop Drawings, MTO, Fasteners, Accessories, Sealed Engineering Calculations*

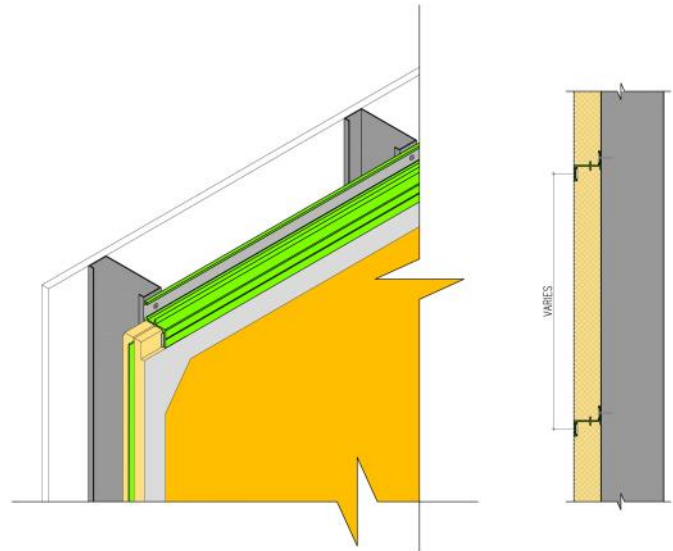


SMARTci™ Basic

This system includes our continuous, insulated fiberglass-reinforced plastic (FRP) GREENgirt and custom-profiled rigid insulation panels. FRP splines connect the insulation panels, and GREENgirt acts as sub-furring to house the CI and provide cladding attachment support. It is intended to be used with a customer-provided weather-resistive barrier (WRB).

INCLUDED ITEMS: GREENgirt, Custom-Profiled Rigid Insulation Panels, FRP Connection Splines, Product Data, Installation Literature, Cladding Review.

EXCLUDED ITEMS*: Metal Sub-Furring, Shop Drawings, MTO, Fasteners, Accessories, Sealed Engineering Calculations*

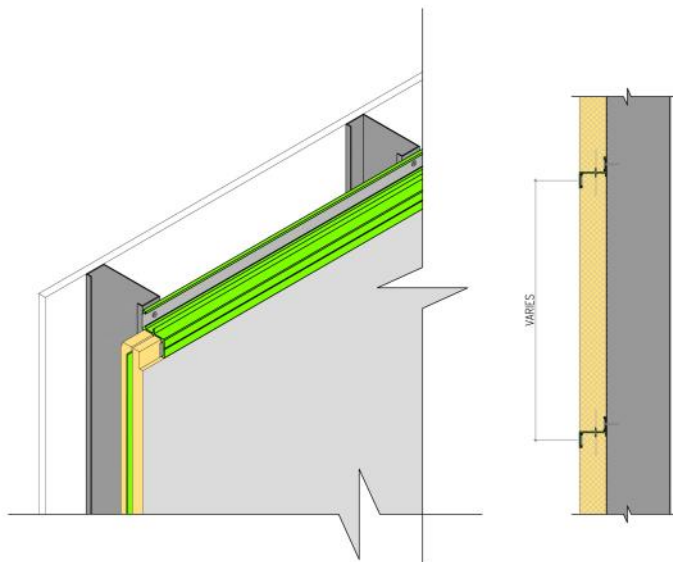


SMARTci™ Plus

This system includes our continuous, insulated fiberglass-reinforced plastic (FRP) GREENgirt and custom-profiled, foil-faced polyisocyanurate (ISO) insulation panels. FRP splines connect the insulation panels, and GREENgirt acts as sub-furring to house the CI and provide cladding attachment support. The application of *required accessories* (termination angles, tape, caulk/tube sealant and expanding foam sealant) provides an air/vapor/weather-resistive barrier.

INCLUDED ITEMS: GREENgirt, Custom-Profiled Rigid Insulation Panels, FRP Connection Splines, Shop Drawings (fee applies), Required Accessories (fee applies), Product Data, Installation Literature, Cladding Review.

EXCLUDED ITEMS*: MTO, Metal Sub-Furring, Fasteners, Sealed Engineering Calculations*



*Certain items are available for a fee. Contact A2P Sales for more information.