



SMARTci CUSTOM-PROFILED RIGID INSULATION, WITH SPLINES AT ALL VERT. JOINTS

GREENGIRTS ATTACHED TO SUBSTRATE; SPACING AS REQUIRED PER LOADING CONDITIONS AND CODES; MAX. 1/4" SHIMS WHERE REQ'D

FILL ALL GAPS GREATER THAN 1/8" W/EXPANDING SPRAY FOAM

VARIES

OPTIONAL INTERIOR VAPOR RETARDER (BY OTHERS)

SHEATHING ON METAL (OR WOOD) FRAMING / MASONRY WALL ASSEMBLY (BY OTHERS)

WRB (BY OTHERS)

@ SHEATHED WALLS: APPROVED 1/4"-14 LOW-PROFILE FASTENERS, MAX. 16" O.C.; MUST FASTEN INTO STUDS, TYP. (BY OTHERS)

@ MASONRY WALLS: APPROVED 1/4" LOW-PROFILE THREADED AND COATED MASONRY FASTENERS, MAX. 16" O.C., TYP. (BY OTHERS)

NOTE! GREENGIRTS AND CUSTOM-PROFILED RIGID INSULATION PANELS ARE PROVIDED FOR THIS PROJECT AS THERMALLY-BROKEN, CONTINUOUS INSULATION ONLY. CUSTOMER TO PROVIDE AND INSTALL CONTINUOUS AIR/WATER AND WEATHER BARRIER SYSTEM PER SPECIFICATIONS AND MANUFACTURER'S DIRECTIONS. CONSULT SMACNA AND ABAA FOR PROPER USE OF SEALANT. THIS INSTALLATION MAKES NO CLAIMS OR GUARANTEES ABOUT WEATHER TIGHTNESS, RESISTANCE OR PROTECTION.



SMARTci System

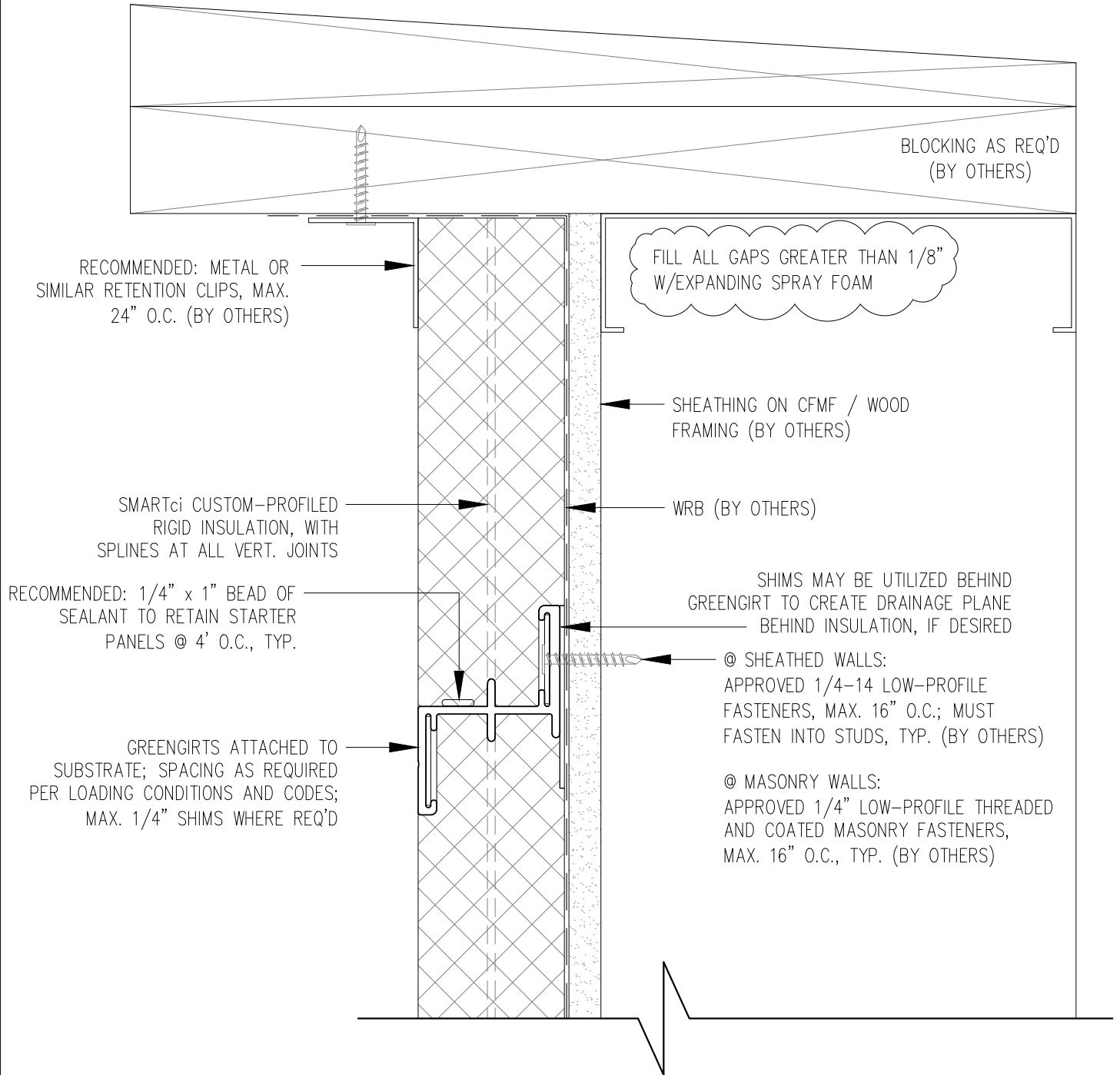
www.SMARTciSystems.com

1 (269) 355-1818

SUBSTRATE: SHEATHING / MASONRY	SMARTci™ RIGID INSULATION PANEL
CLADDING: -	DATE: -
SIMPLE-Z SIZE: 200	GIRT ORIENTATION: HORIZONTAL

WALL SECTION

NOT TO SCALE



NOTE! GREENGIRTS AND CUSTOM-PROFILED RIGID INSULATION PANELS ARE PROVIDED FOR THIS PROJECT AS THERMALLY-BROKEN, CONTINUOUS INSULATION ONLY. CUSTOMER TO PROVIDE AND INSTALL CONTINUOUS AIR/WATER AND WEATHER BARRIER SYSTEM PER SPECIFICATIONS AND MANUFACTURER'S DIRECTIONS. CONSULT SMACNA AND ABAA FOR PROPER USE OF SEALANT. THIS INSTALLATION MAKES NO CLAIMS OR GUARANTEES ABOUT WEATHER TIGHTNESS, RESISTANCE OR PROTECTION.



SMARTci System

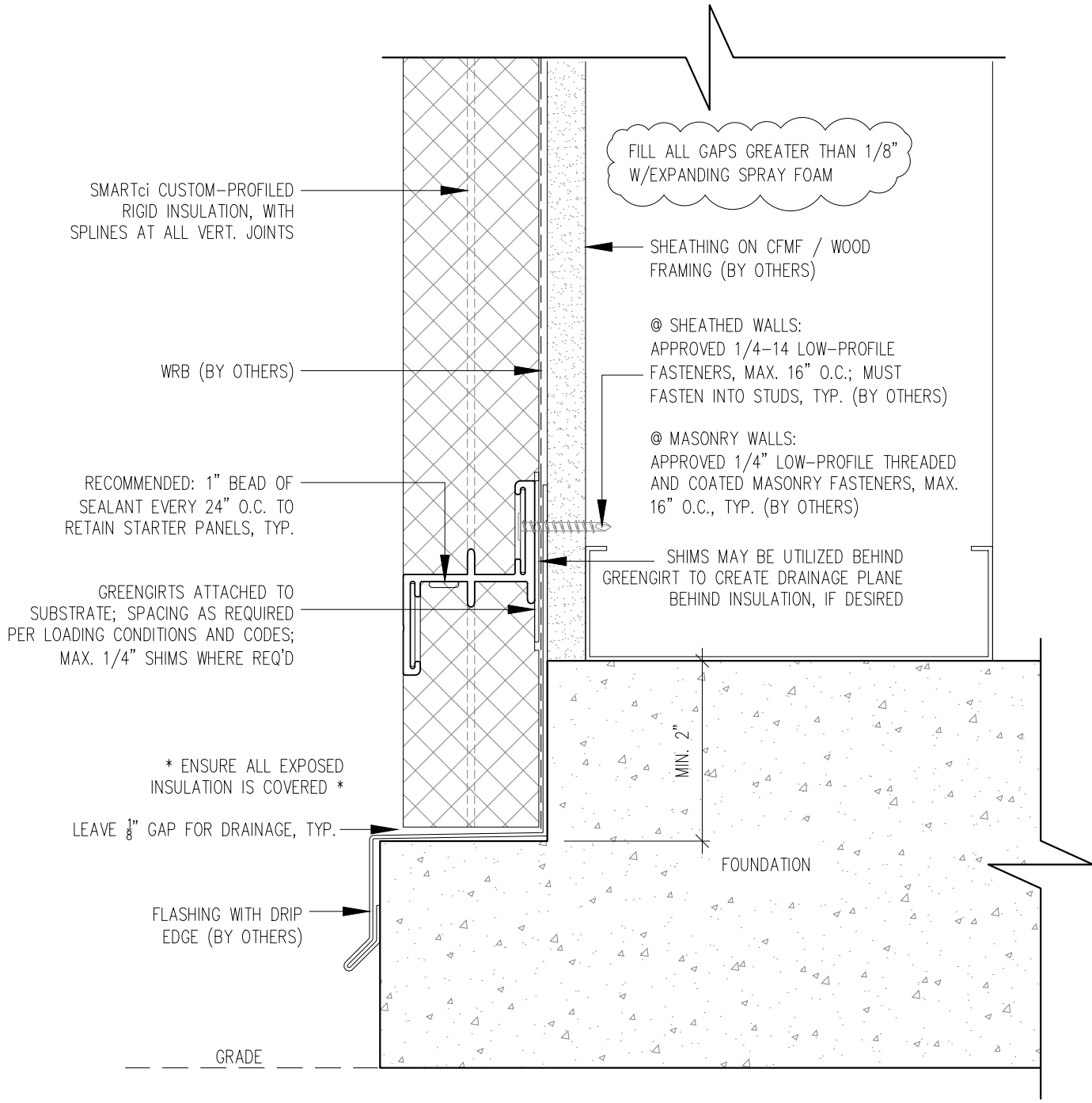
www.SMARTciSystems.com

1 (269) 355-1818

SUBSTRATE: SHEATHING / MASONRY	SMARTci™ RIGID INSULATION PANEL
CLADDING: -	DATE: -
SIMPLE-Z SIZE: 200	GIRT ORIENTATION: HORIZONTAL

PARAPET DETAIL

NOT TO SCALE



NOTE! GREENGIRTS AND CUSTOM-PROFILED RIGID INSULATION PANELS ARE PROVIDED FOR THIS PROJECT AS THERMALLY-BROKEN, CONTINUOUS INSULATION ONLY. CUSTOMER TO PROVIDE AND INSTALL CONTINUOUS AIR/WATER AND WEATHER BARRIER SYSTEM PER SPECIFICATIONS AND MANUFACTURER'S DIRECTIONS. CONSULT SMACNA AND ABAA FOR PROPER USE OF SEALANT. THIS INSTALLATION MAKES NO CLAIMS OR GUARANTEES ABOUT WEATHER TIGHTNESS, RESISTANCE OR PROTECTION.

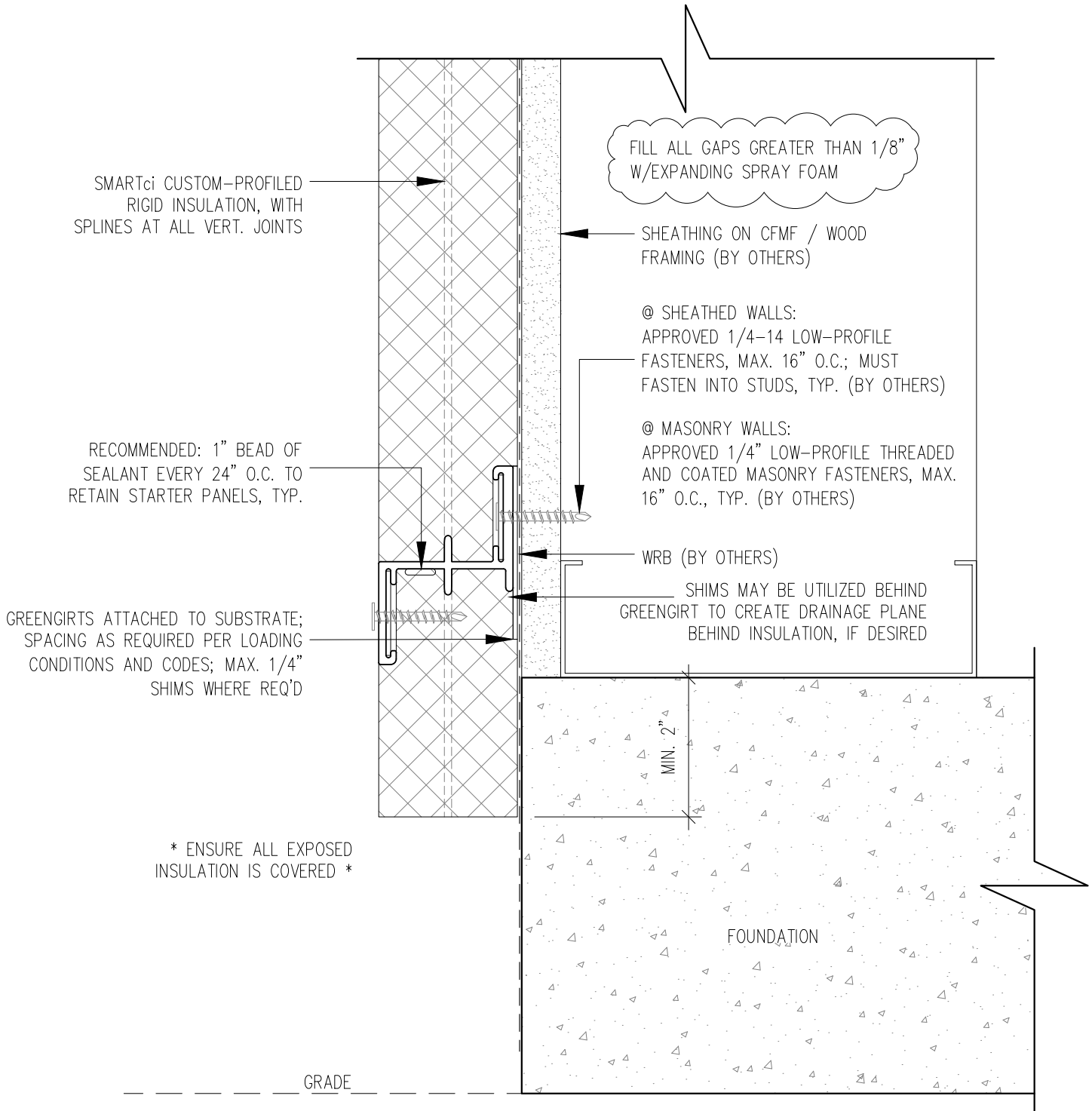


SMARTci System

SUBSTRATE: SHEATHING / MASONRY	SMARTci™ RIGID INSULATION PANEL
CLADDING: -	DATE: -
SIMPLE-Z SIZE: 200	GIRT ORIENTATION: HORIZONTAL

FOUNDATION NOTCH DETAIL

NOT TO SCALE



NOTE! GREENGIRTS AND CUSTOM-PROFILED RIGID INSULATION PANELS ARE PROVIDED FOR THIS PROJECT AS THERMALLY-BROKEN, CONTINUOUS INSULATION ONLY. CUSTOMER TO PROVIDE AND INSTALL CONTINUOUS AIR/WATER AND WEATHER BARRIER SYSTEM PER SPECIFICATIONS AND MANUFACTURER'S DIRECTIONS. CONSULT SMACNA AND ABAA FOR PROPER USE OF SEALANT. THIS INSTALLATION MAKES NO CLAIMS OR GUARANTEES ABOUT WEATHER TIGHTNESS, RESISTANCE OR PROTECTION.



SMARTci System

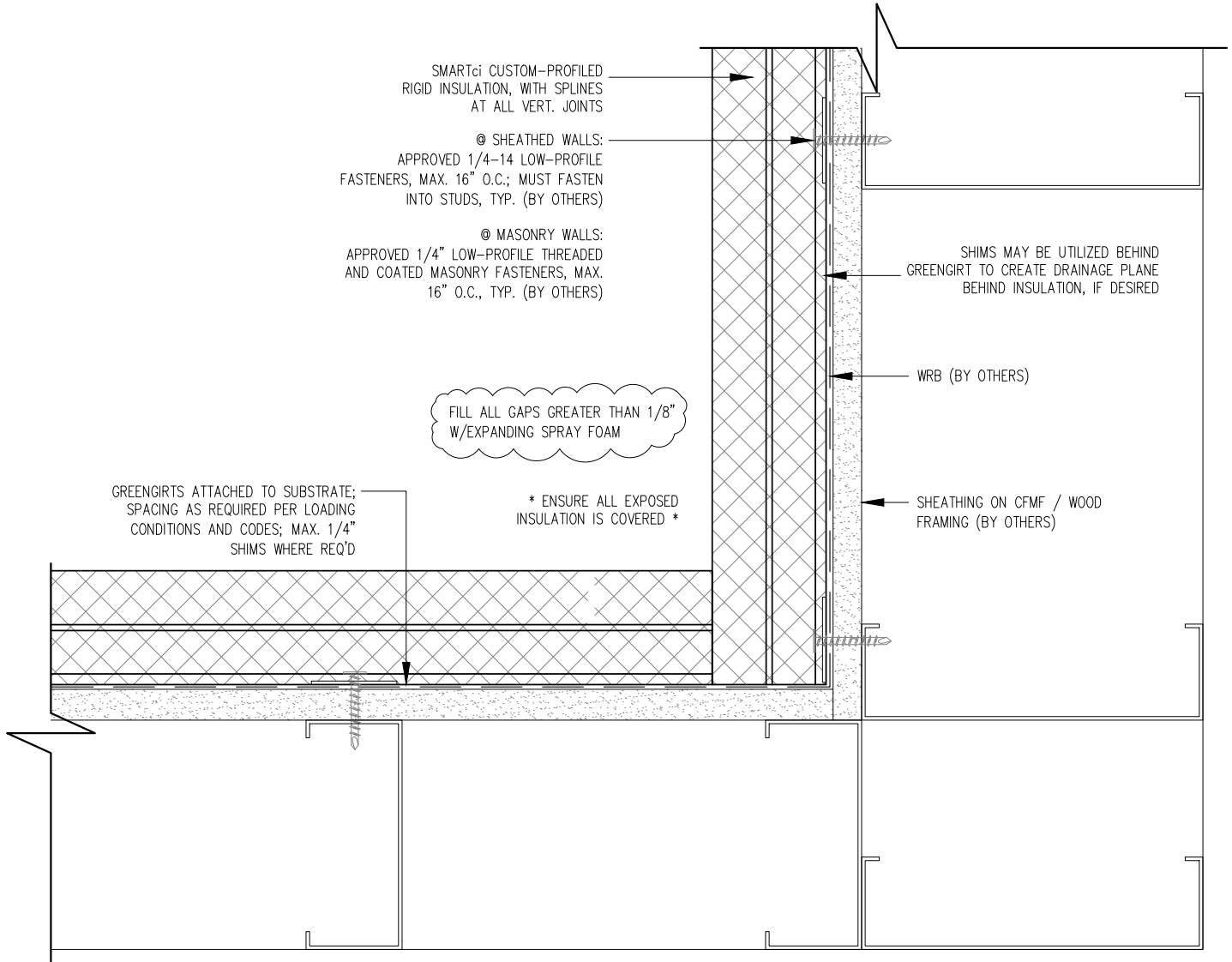
www.SMARTciSystems.com

1 (269) 355-1818

SUBSTRATE: SHEATHING / MASONRY	SMARTci™ RIGID INSULATION PANEL
CLADDING: -	DATE: -
SIMPLE-Z SIZE: 200	GIRT ORIENTATION: HORIZONTAL

FOUNDATION FLUSH DETAIL

NOT TO SCALE



NOTE! GREENGIRTS AND CUSTOM-PROFILED RIGID INSULATION PANELS ARE PROVIDED FOR THIS PROJECT AS THERMALLY-BROKEN, CONTINUOUS INSULATION ONLY. CUSTOMER TO PROVIDE AND INSTALL CONTINUOUS AIR/WATER AND WEATHER BARRIER SYSTEM PER SPECIFICATIONS AND MANUFACTURER'S DIRECTIONS. CONSULT SMACNA AND ABAA FOR PROPER USE OF SEALANT. THIS INSTALLATION MAKES NO CLAIMS OR GUARANTEES ABOUT WEATHER TIGHTNESS, RESISTANCE OR PROTECTION.



SMARTci System

www.SMARTciSystems.com

1 (269) 355-1818

SUBSTRATE: SHEATHING / MASONRY

SMARTci™ RIGID INSULATION PANEL

CLADDING: -

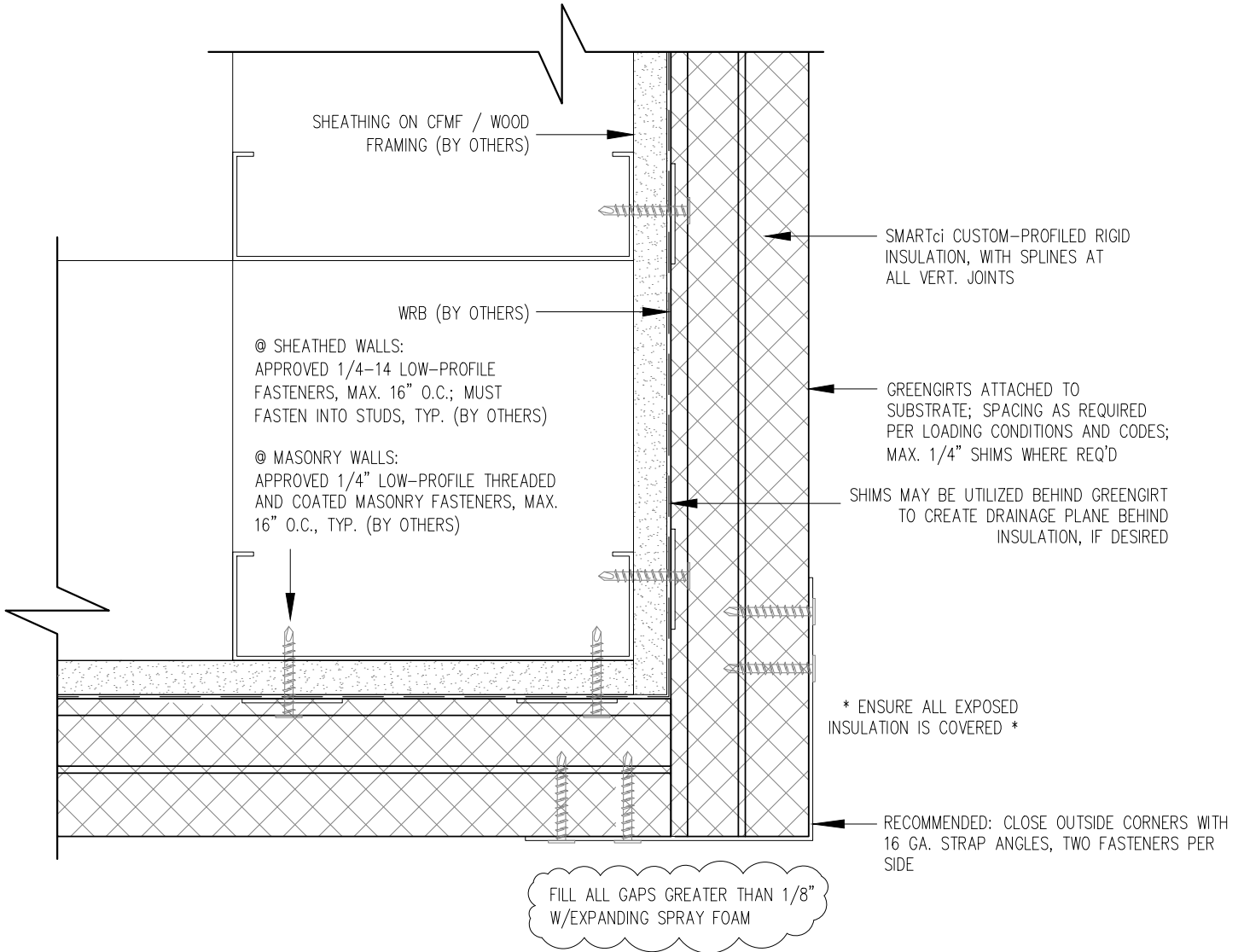
DATE: -

SIMPLE-Z SIZE: 200

GIRT ORIENTATION: HORIZONTAL

INSIDE CORNER DETAIL

NOT TO SCALE



NOTE! GREENIRT'S AND CUSTOM-PROFILED RIGID INSULATION PANELS ARE PROVIDED FOR THIS PROJECT AS THERMALLY-BROKEN, CONTINUOUS INSULATION ONLY. CUSTOMER TO PROVIDE AND INSTALL CONTINUOUS AIR/WATER AND WEATHER BARRIER SYSTEM PER SPECIFICATIONS AND MANUFACTURER'S DIRECTIONS. CONSULT SMACNA AND ABAA FOR PROPER USE OF SEALANT. THIS INSTALLATION MAKES NO CLAIMS OR GUARANTEES ABOUT WEATHER TIGHTNESS, RESISTANCE OR PROTECTION.



SMARTci System

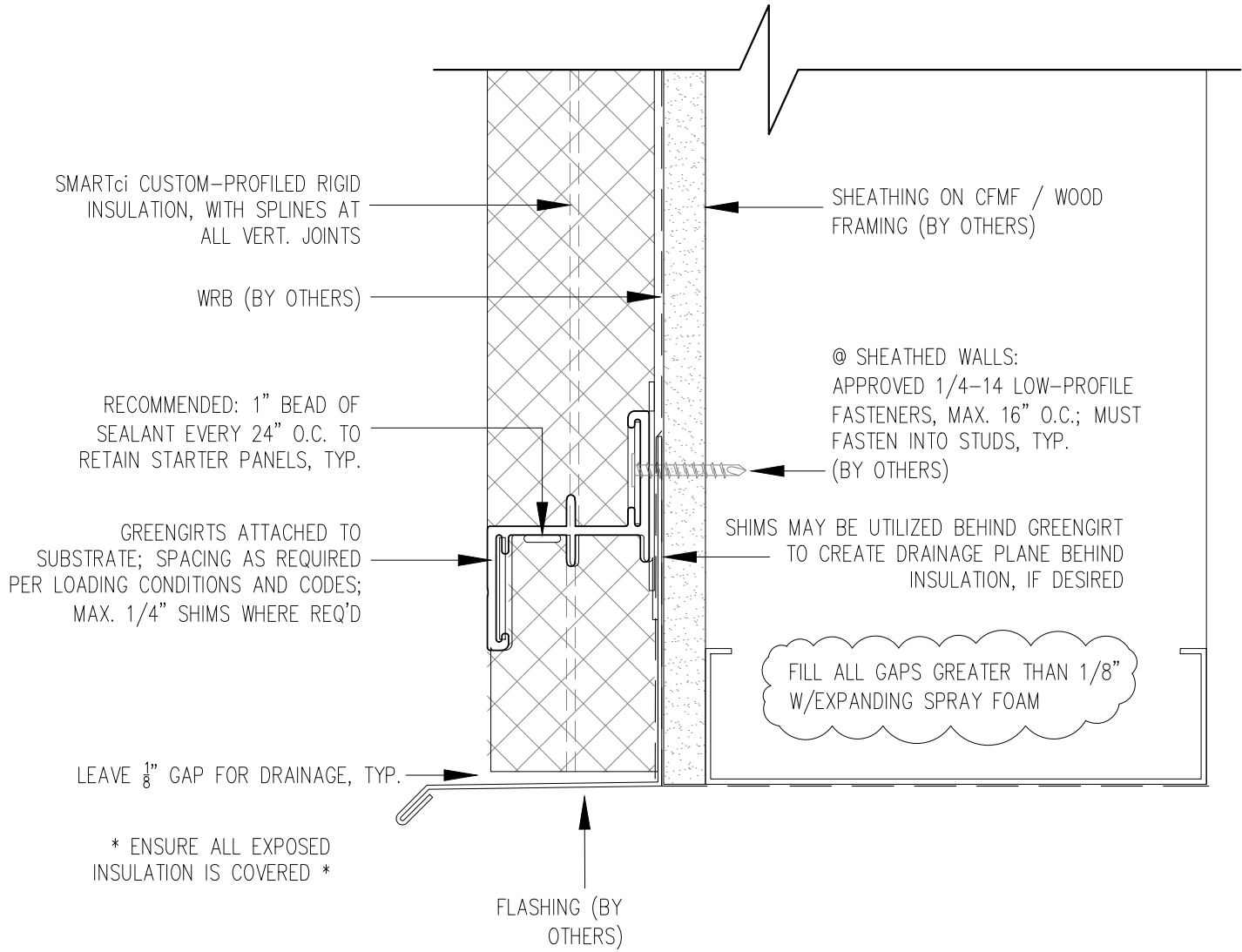
www.SMARTciSystems.com

1 (269) 355-1818

SUBSTRATE: SHEATHING / MASONRY	SMARTci™ RIGID INSULATION PANEL
CLADDING: -	DATE: -
SIMPLE-Z SIZE: 200	GIRT ORIENTATION: HORIZONTAL

OUTSIDE CORNER DETAIL

NOT TO SCALE



NOTE! GREENGIRTS AND CUSTOM-PROFILED RIGID INSULATION PANELS ARE PROVIDED FOR THIS PROJECT AS THERMALLY-BROKEN, CONTINUOUS INSULATION ONLY. CUSTOMER TO PROVIDE AND INSTALL CONTINUOUS AIR/WATER AND WEATHER BARRIER SYSTEM PER SPECIFICATIONS AND MANUFACTURER'S DIRECTIONS. CONSULT SMACNA AND ABAA FOR PROPER USE OF SEALANT. THIS INSTALLATION MAKES NO CLAIMS OR GUARANTEES ABOUT WEATHER TIGHTNESS, RESISTANCE OR PROTECTION.



SMARTci System

www.SMARTciSystems.com

1 (269) 355-1818

SUBSTRATE: SHEATHING / MASONRY

SMARTci™ RIGID INSULATION PANEL

CLADDING: -

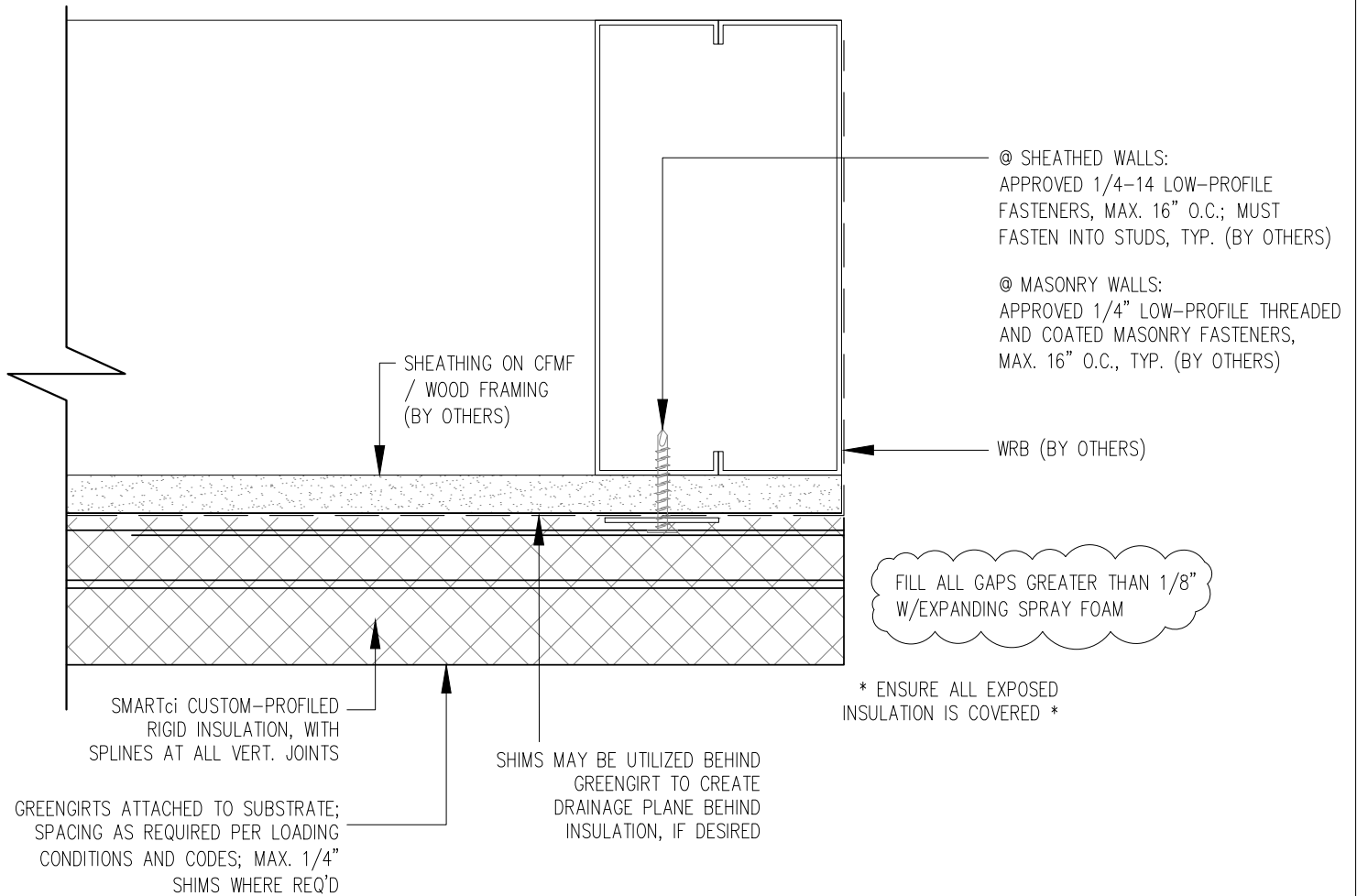
DATE: -

SIMPLE-Z SIZE: 200

GIRT ORIENTATION: HORIZONTAL

HEADER DETAIL

NOT TO SCALE



NOTE! GREENGIRTS AND CUSTOM-PROFILED RIGID INSULATION PANELS ARE PROVIDED FOR THIS PROJECT AS THERMALLY-BROKEN, CONTINUOUS INSULATION ONLY. CUSTOMER TO PROVIDE AND INSTALL CONTINUOUS AIR/WATER AND WEATHER BARRIER SYSTEM PER SPECIFICATIONS AND MANUFACTURER'S DIRECTIONS. CONSULT SMACNA AND ABAA FOR PROPER USE OF SEALANT. THIS INSTALLATION MAKES NO CLAIMS OR GUARANTEES ABOUT WEATHER TIGHTNESS, RESISTANCE OR PROTECTION.



SMARTci System

www.SMARTciSystems.com

1 (269) 355-1818

SUBSTRATE: SHEATHING / MASONRY

CLADDING: -

SIMPLE-Z SIZE: 200

SMARTci™ RIGID INSULATION PANEL

DATE: -

GIRT ORIENTATION: HORIZONTAL

JAMB DETAIL

NOT TO SCALE



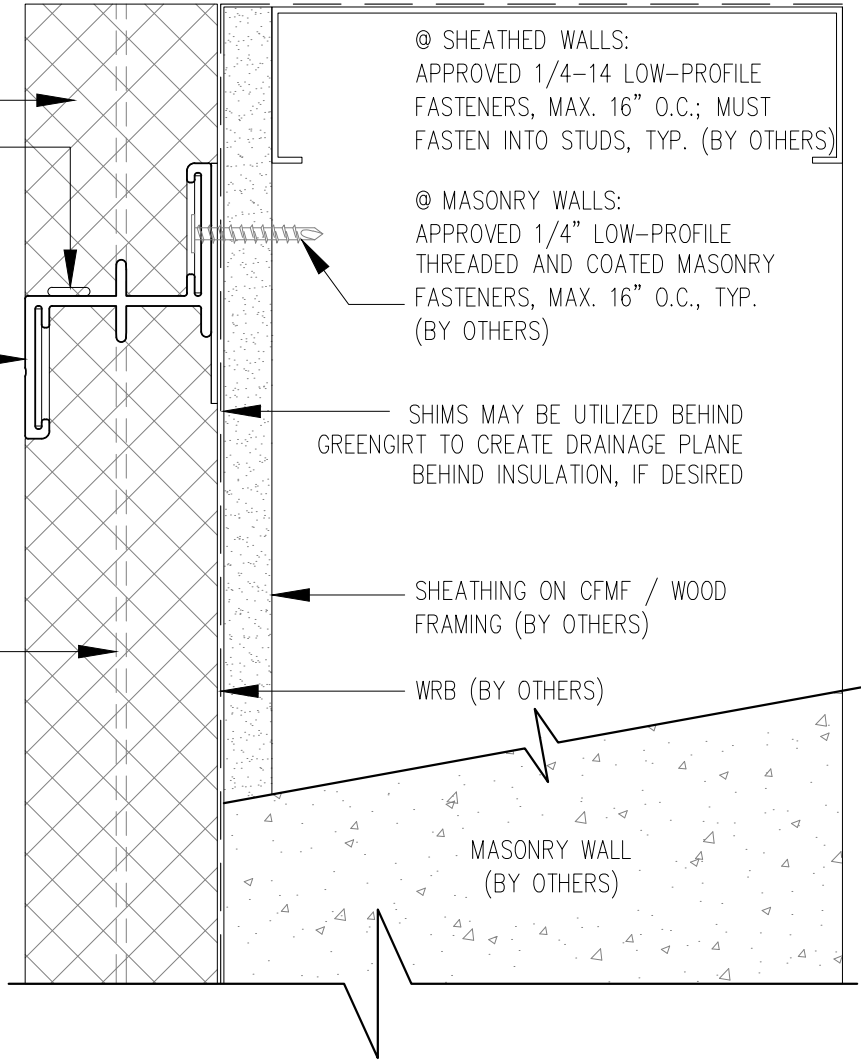
* ENSURE ALL EXPOSED INSULATION IS COVERED *

CUSTOM FIELD-CUT SMARTci RIGID INSULATION PANEL
RECOMMENDED: 1/4" x 1" BEAD OF SEALANT TO RETAIN STARTER PANELS @ 4' O.C., TYP.

GREENGIRTS ATTACHED TO SUBSTRATE; SPACING AS REQUIRED PER LOADING CONDITIONS AND CODES; MAX. 1/4" SHIMS WHERE REQ'D

FILL ALL GAPS GREATER THAN 1/8" W/EXPANDING SPRAY FOAM

SMARTci CUSTOM-PROFILED RIGID INSULATION, WITH SPLINES AT ALL VERT. JOINTS



@ SHEATHED WALLS:
APPROVED 1/4"-14 LOW-PROFILE FASTENERS, MAX. 16" O.C.; MUST FASTEN INTO STUDS, TYP. (BY OTHERS)

@ MASONRY WALLS:
APPROVED 1/4" LOW-PROFILE THREADED AND COATED MASONRY FASTENERS, MAX. 16" O.C., TYP. (BY OTHERS)

SHIMS MAY BE UTILIZED BEHIND GREENGIRT TO CREATE DRAINAGE PLANE BEHIND INSULATION, IF DESIRED

SHEATHING ON CFMF / WOOD FRAMING (BY OTHERS)

WRB (BY OTHERS)

MASONRY WALL (BY OTHERS)

NOTE! GREENGIRTS AND CUSTOM-PROFILED RIGID INSULATION PANELS ARE PROVIDED FOR THIS PROJECT AS THERMALLY-BROKEN, CONTINUOUS INSULATION ONLY. CUSTOMER TO PROVIDE AND INSTALL CONTINUOUS AIR/WATER AND WEATHER BARRIER SYSTEM PER SPECIFICATIONS AND MANUFACTURER'S DIRECTIONS. CONSULT SMACNA AND ABAA FOR PROPER USE OF SEALANT. THIS INSTALLATION MAKES NO CLAIMS OR GUARANTEES ABOUT WEATHER TIGHTNESS, RESISTANCE OR PROTECTION.



SMARTci System

www.SMARTciSystems.com

1 (269) 355-1818

SUBSTRATE: SHEATHING / MASONRY

CLADDING: -

SIMPLE-Z SIZE: 200

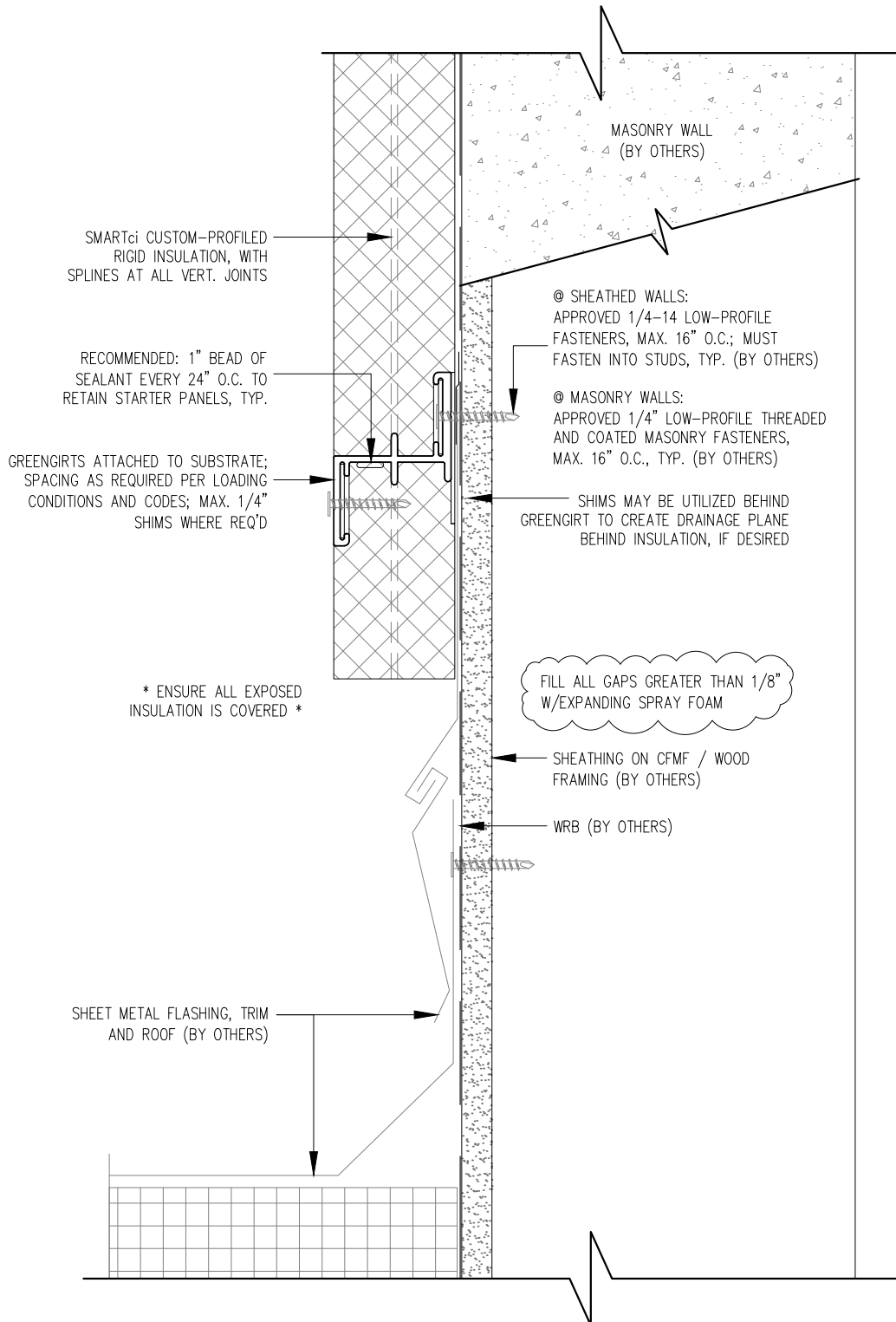
SMARTci™ RIGID INSULATION PANEL

DATE: -

GIRT ORIENTATION: HORIZONTAL

SILL DETAIL

NOT TO SCALE



NOTE! GREENGIRTS AND CUSTOM-PROFILED RIGID INSULATION PANELS ARE PROVIDED FOR THIS PROJECT AS THERMALLY-BROKEN, CONTINUOUS INSULATION ONLY. CUSTOMER TO PROVIDE AND INSTALL CONTINUOUS AIR/WATER AND WEATHER BARRIER SYSTEM PER SPECIFICATIONS AND MANUFACTURER'S DIRECTIONS. CONSULT SMACNA AND ABAA FOR PROPER USE OF SEALANT. THIS INSTALLATION MAKES NO CLAIMS OR GUARANTEES ABOUT WEATHER TIGHTNESS, RESISTANCE OR PROTECTION.



SMARTci System

www.SMARTciSystems.com

1 (269) 355-1818

SUBSTRATE: SHEATHING / MASONRY

SMARTci™ RIGID INSULATION PANEL

CLADDING: -

DATE: -

SIMPLE-Z SIZE: 200

GIRT ORIENTATION: HORIZONTAL

BASE AT ROOF-1

NOT TO SCALE