



FILL ALL GAPS GREATER THAN 1/8" W/EXPANDING SPRAY FOAM

WRB (BY OTHERS)

AIR SPACE

BRICK VENEER SYSTEM ATTACHED TO GREENGIRTS WITH CORROSION RESISTANT FASTENER AND APPROVED BRICK TIE; DEAD LOAD NOT SUPPORTED BY GREENGIRTS; SPACING AS REQ'D PER LOADING CONDITIONS & CODE (BY OTHERS)

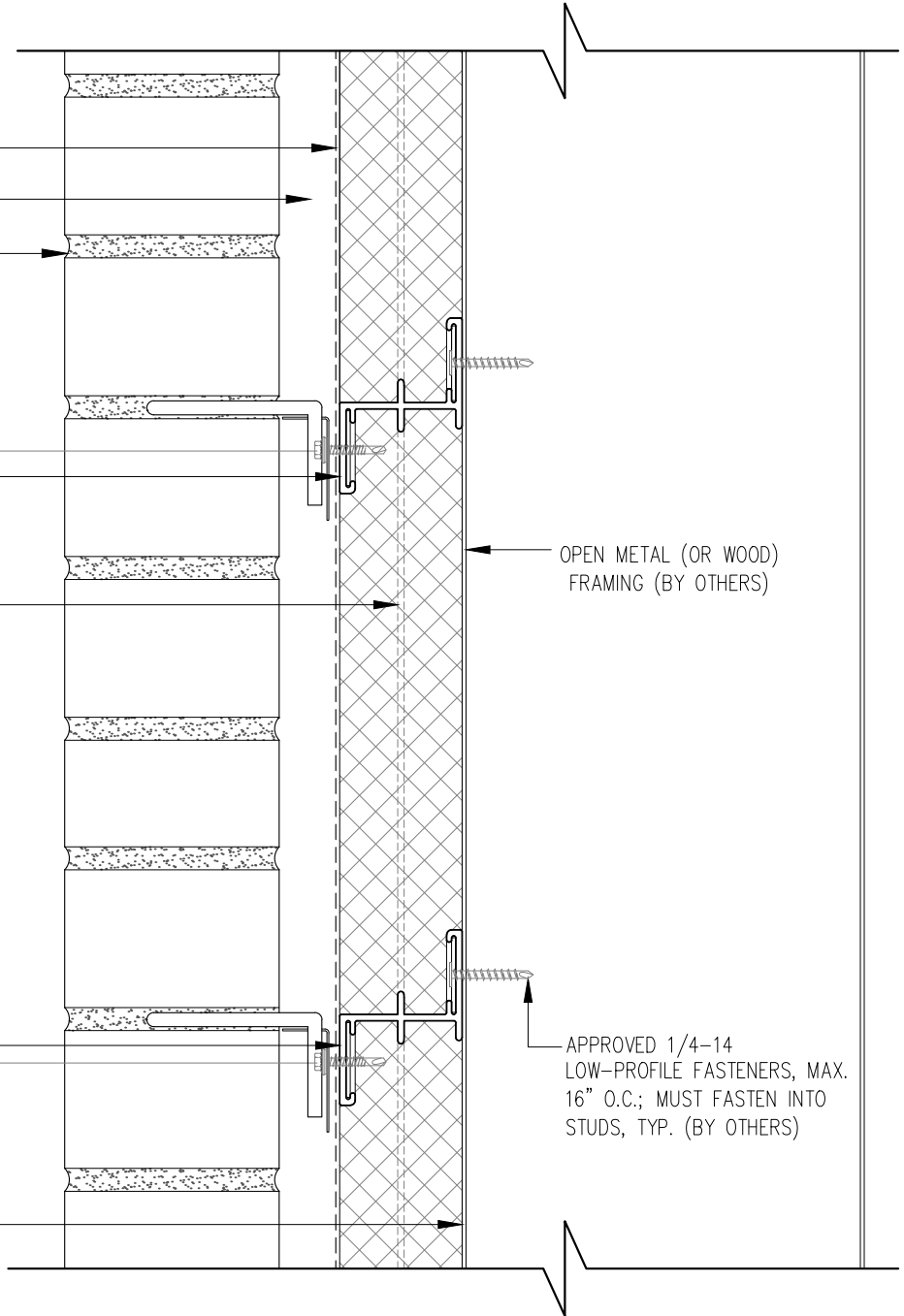
GREENGIRTS ATTACHED TO SUBSTRATE; SPACING AS REQUIRED PER LOADING CONDITIONS AND CODES; MAX. 1/4" SHIMS WHERE REQ'D

SMARTci CUSTOM-PROFILED RIGID INSULATION, WITH SPLINES AT ALL VERT. JOINTS

VARIES

GREENGIRTS ATTACHED TO SUBSTRATE; SPACING AS REQUIRED PER LOADING CONDITIONS AND CODES; MAX. 1/4" SHIMS WHERE REQ'D

OVER OPEN FRAMING, FILL ALL INTERIOR SMARTci VOIDS WITH APPROVED EXPANDABLE SEALANT, TYP.



OPEN METAL (OR WOOD) FRAMING (BY OTHERS)

APPROVED 1/4-14 LOW-PROFILE FASTENERS, MAX. 16" O.C.; MUST FASTEN INTO STUDS, TYP. (BY OTHERS)

NOTE! GREENGIRTS AND CUSTOM-PROFILED RIGID INSULATION PANELS ARE PROVIDED FOR THIS PROJECT AS THERMALLY-BROKEN, CONTINUOUS INSULATION ONLY. CUSTOMER TO PROVIDE AND INSTALL CONTINUOUS AIR/WATER AND WEATHER BARRIER SYSTEM PER SPECIFICATIONS AND MANUFACTURER'S DIRECTIONS. CONSULT SMACNA AND ABAA FOR PROPER USE OF SEALANT. THIS INSTALLATION MAKES NO CLAIMS OR GUARANTEES ABOUT WEATHER TIGHTNESS, RESISTANCE OR PROTECTION.



SMARTci System

www.SMARTciSystems.com

1 (269) 355-1818

SUBSTRATE: OPEN FRAMING

CLADDING: BRICK

SIMPLE-Z SIZE: 200

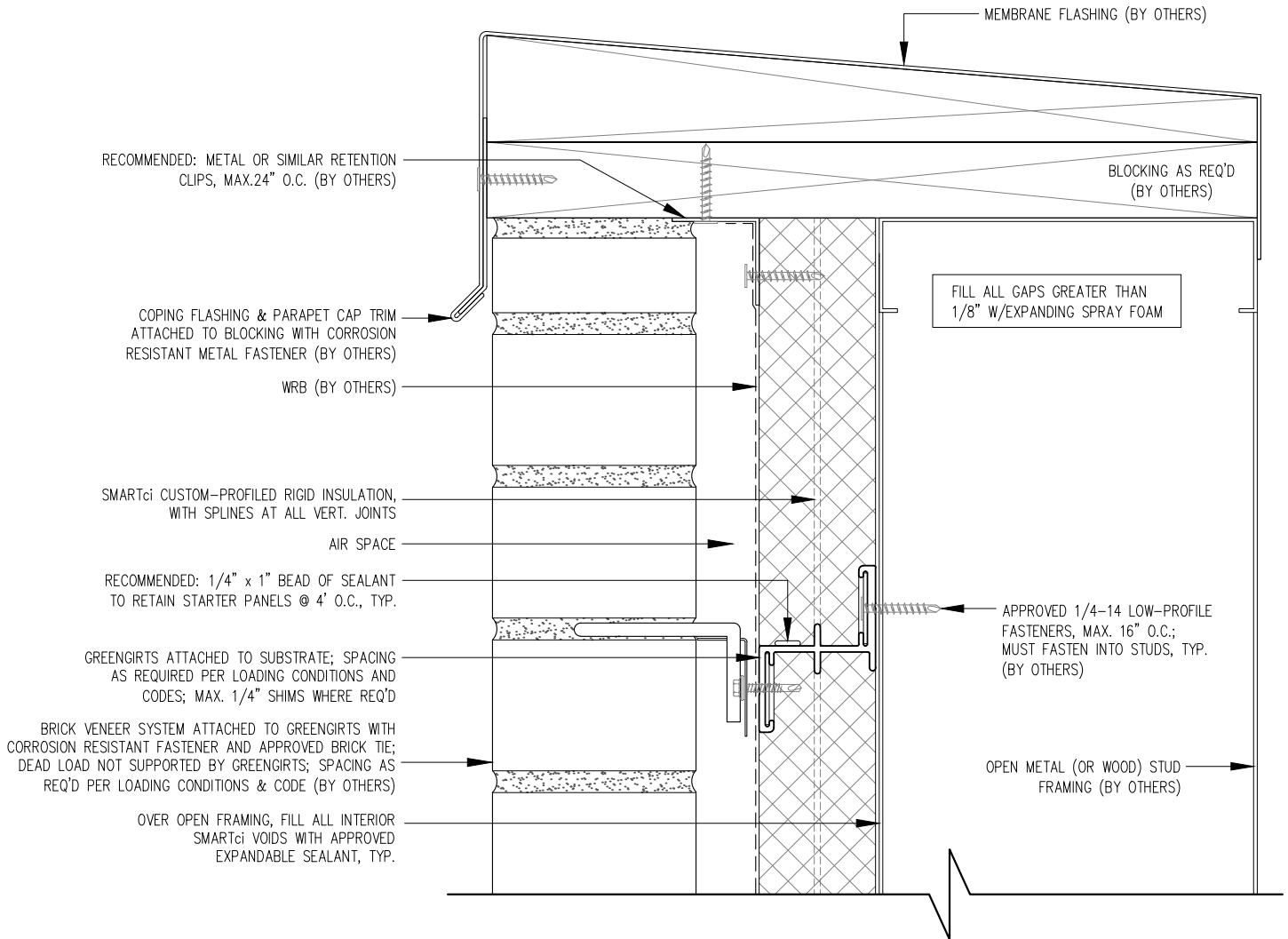
SMARTci™ RIGID INSULATION PANEL

DATE: 06-08-18

GIRT ORIENTATION: HORIZONTAL

WALL SECTION

NOT TO SCALE



NOTE! GREENGIRTS AND CUSTOM-PROFILED RIGID INSULATION PANELS ARE PROVIDED FOR THIS PROJECT AS THERMALLY-BROKEN, CONTINUOUS INSULATION ONLY. CUSTOMER TO PROVIDE AND INSTALL CONTINUOUS AIR/WATER AND WEATHER BARRIER SYSTEM PER SPECIFICATIONS AND MANUFACTURER'S DIRECTIONS. CONSULT SMACNA AND ABAA FOR PROPER USE OF SEALANT. THIS INSTALLATION MAKES NO CLAIMS OR GUARANTEES ABOUT WEATHER TIGHTNESS, RESISTANCE OR PROTECTION.



SMARTci System

www.SMARTciSystems.com

1 (269) 355-1818

SUBSTRATE: OPEN FRAMING

CLADDING: BRICK

SIMPLE-Z SIZE: 200

SMARTci™ RIGID INSULATION PANEL

DATE: 06-08-18

GIRT ORIENTATION: HORIZONTAL

PARAPET DETAIL

NOT TO SCALE



BRICK VENEER SYSTEM ATTACHED TO GREENGIRTS WITH CORROSION RESISTANT FASTENER AND APPROVED BRICK TIE; DEAD LOAD NOT SUPPORTED BY GREENGIRTS; SPACING AS REQ'D PER LOADING CONDITIONS & CODE (BY OTHERS)

AIR SPACE

2" 16 GAUGE GALVANIZED STEEL METAL STRAPPING, 24" O.C. AT ALL BRICK WALLS, FASTENED TO EACH GREENGIRT (BY OTHERS)

SMARTci CUSTOM-PROFILED RIGID INSULATION, WITH SPLINES AT ALL VERT. JOINTS

OVER OPEN FRAMING, FILL ALL INTERIOR SMARTci VOIDS WITH APPROVED EXPANDABLE SEALANT, TYP.

WRB (BY OTHERS)

RECOMMENDED: 1" BEAD OF SEALANT EVERY 24" O.C. TO RETAIN STARTER PANELS, TYP.

GREENGIRTS ATTACHED TO SUBSTRATE; SPACING AS REQUIRED PER LOADING CONDITIONS AND CODES; MAX. 1/4" SHIMS WHERE REQ'D

* ENSURE ALL EXPOSED INSULATION IS COVERED *

MEMBRANE FLASHING (BY OTHERS)

GRADE

FILL ALL GAPS GREATER THAN 1/8" W/EXPANDING SPRAY FOAM

OPEN METAL (OR WOOD) STUD FRAMING (BY OTHERS)

APPROVED 1/4-14 LOW-PROFILE FASTENERS, MAX. 16" O.C.; MUST FASTEN INTO STUDS, TYP. (BY OTHERS)

MIN. 2"

FOUNDATION

NOTE! GREENGIRTS AND CUSTOM-PROFILED RIGID INSULATION PANELS ARE PROVIDED FOR THIS PROJECT AS THERMALLY-BROKEN, CONTINUOUS INSULATION ONLY. CUSTOMER TO PROVIDE AND INSTALL CONTINUOUS AIR/WATER AND WEATHER BARRIER SYSTEM PER SPECIFICATIONS AND MANUFACTURER'S DIRECTIONS. CONSULT SMACNA AND ABAA FOR PROPER USE OF SEALANT. THIS INSTALLATION MAKES NO CLAIMS OR GUARANTEES ABOUT WEATHER TIGHTNESS, RESISTANCE OR PROTECTION.



SMARTci System

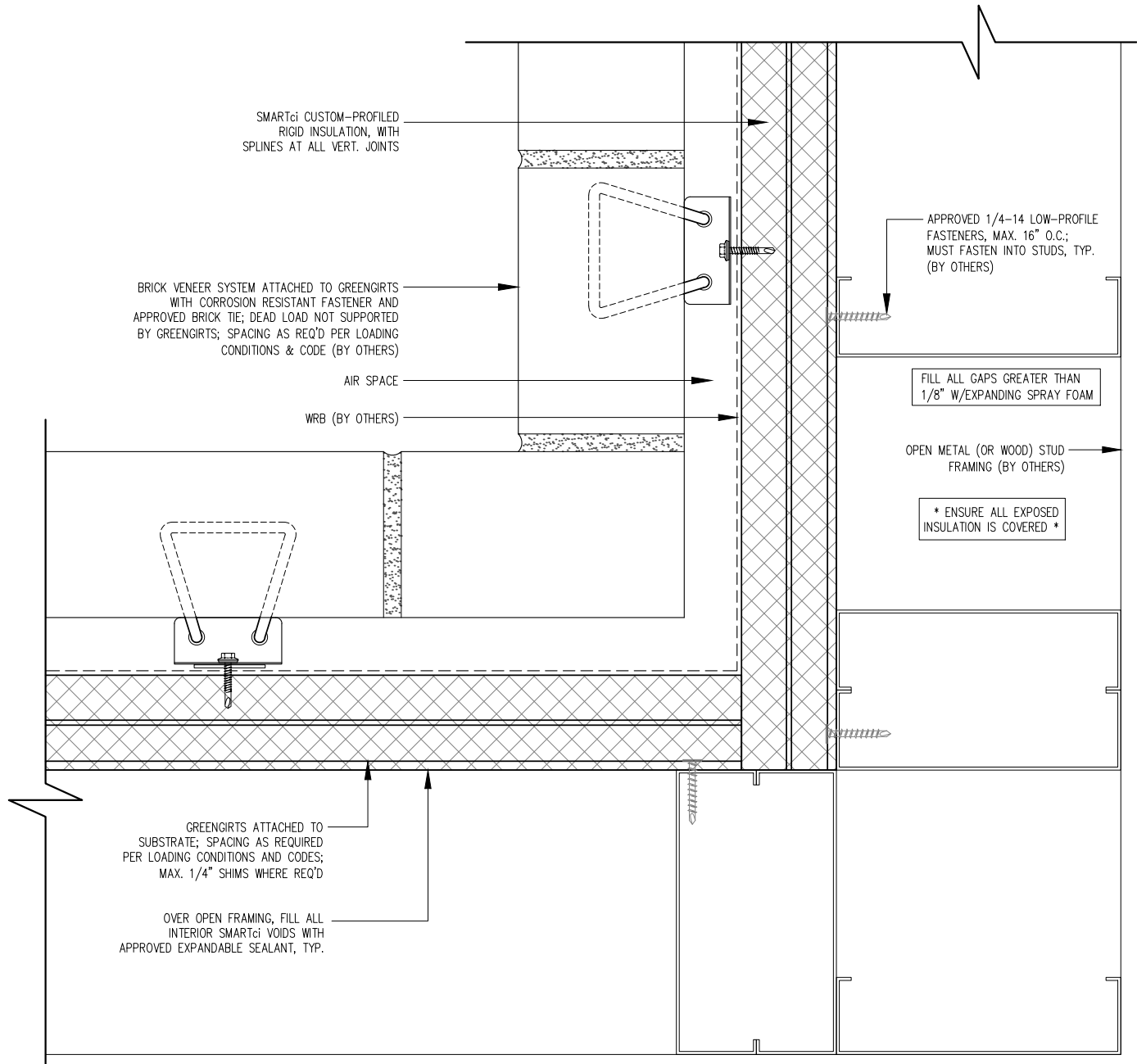
www.SMARTciSystems.com

1 (269) 355-1818

SUBSTRATE: OPEN FRAMING	SMARTci™ RIGID INSULATION PANEL
CLADDING: BRICK	DATE: 06-08-18
SIMPLE-Z SIZE: 200	GIRT ORIENTATION: HORIZONTAL

FOUNDATION NOTCH DETAIL

NOT TO SCALE



NOTE! GREENGIRTS AND CUSTOM-PROFILED RIGID INSULATION PANELS ARE PROVIDED FOR THIS PROJECT AS THERMALLY-BROKEN, CONTINUOUS INSULATION ONLY. CUSTOMER TO PROVIDE AND INSTALL CONTINUOUS AIR/WATER AND WEATHER BARRIER SYSTEM PER SPECIFICATIONS AND MANUFACTURER'S DIRECTIONS. CONSULT SMACNA AND ABAA FOR PROPER USE OF SEALANT. THIS INSTALLATION MAKES NO CLAIMS OR GUARANTEES ABOUT WEATHER TIGHTNESS, RESISTANCE OR PROTECTION.



SMARTci System

www.SMARTciSystems.com

1 (269) 355-1818

SUBSTRATE: OPEN FRAMING

CLADDING: BRICK

SIMPLE-Z SIZE: 200

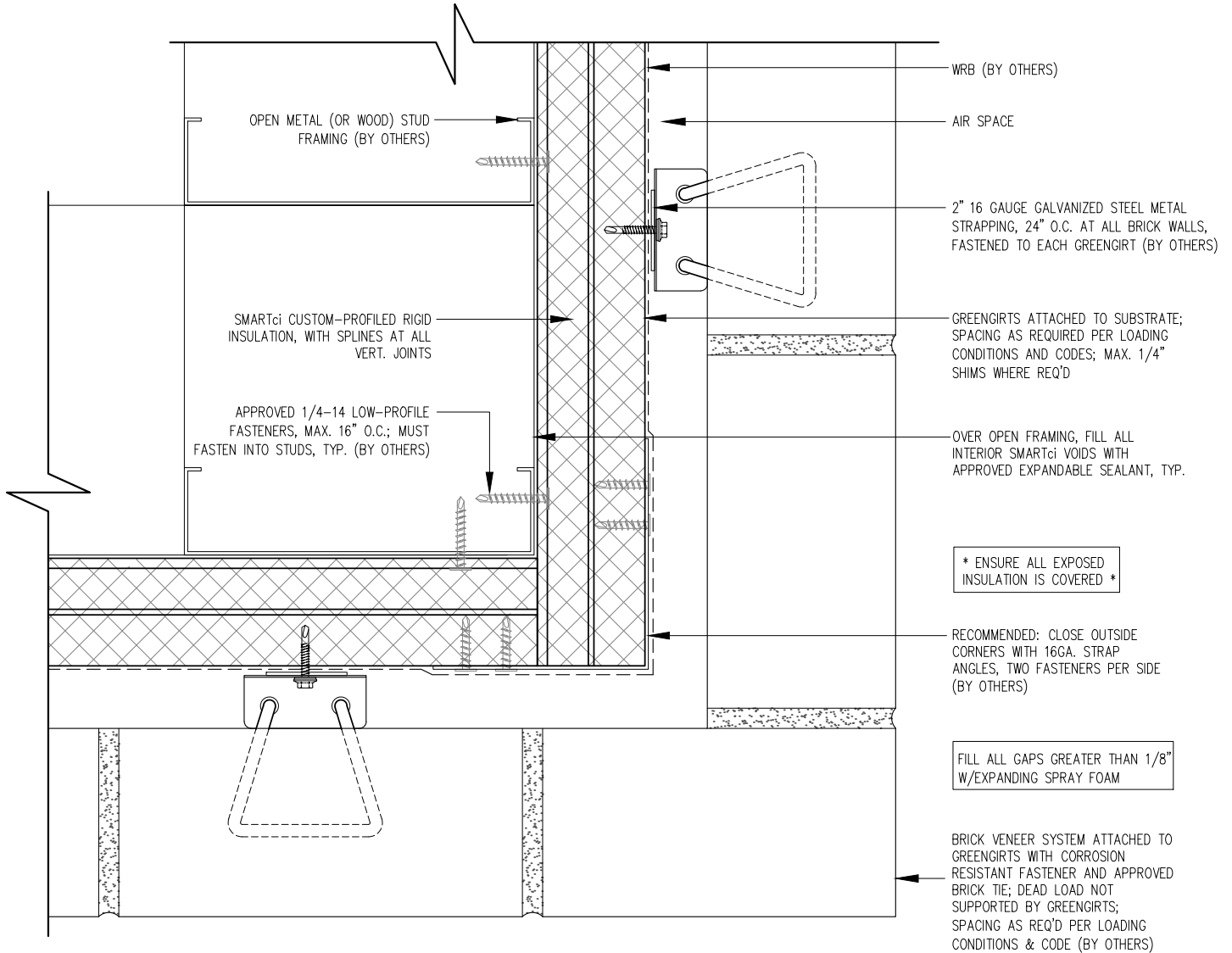
SMARTci™ RIGID INSULATION PANEL

DATE: 06-08-18

GIRT ORIENTATION: HORIZONTAL

INSIDE CORNER DETAIL

NOT TO SCALE



NOTE! GREENGIRTS AND CUSTOM-PROFILED RIGID INSULATION PANELS ARE PROVIDED FOR THIS PROJECT AS THERMALLY-BROKEN, CONTINUOUS INSULATION ONLY. CUSTOMER TO PROVIDE AND INSTALL CONTINUOUS AIR/WATER AND WEATHER BARRIER SYSTEM PER SPECIFICATIONS AND MANUFACTURER'S DIRECTIONS. CONSULT SMACNA AND ABAA FOR PROPER USE OF SEALANT. THIS INSTALLATION MAKES NO CLAIMS OR GUARANTEES ABOUT WEATHER TIGHTNESS, RESISTANCE OR PROTECTION.



SMARTci System

www.SMARTciSystems.com

1 (269) 355-1818

SUBSTRATE: OPEN FRAMING	SMARTci™ RIGID INSULATION PANEL
CLADDING: BRICK	DATE: 06-08-18
SIMPLE-Z SIZE: 200	GIRT ORIENTATION: HORIZONTAL

OUTSIDE CORNER DETAIL

NOT TO SCALE



BRICK VENEER SYSTEM ATTACHED TO GREENGIRTS WITH CORROSION RESISTANT FASTENER AND APPROVED BRICK TIE; DEAD LOAD NOT SUPPORTED BY GREENGIRTS; SPACING AS REQ'D PER LOADING CONDITIONS & CODE (BY OTHERS)

SMARTci CUSTOM-PROFILED RIGID INSULATION, WITH SPLINES AT ALL VERT. JOINTS

WRB (BY OTHERS)

OVER OPEN FRAMING, FILL ALL INTERIOR SMARTci VOIDS WITH APPROVED EXPANDABLE SEALANT, TYP.

RECOMMENDED: 1" BEAD OF SEALANT EVERY 24" O.C. TO RETAIN STARTER PANELS, TYP.

GREENGIRTS ATTACHED TO SUBSTRATE; SPACING AS REQUIRED PER LOADING CONDITIONS AND CODES; MAX. 1/4" SHIMS WHERE REQ'D

AIR SPACE

CUSTOM FIELD-CUT SMARTci RIGID INSULATION PANEL

STRUCTURAL STEEL LINTEL (BY OTHERS) TO BEAR ON ADJACENT JAMB BRICKS

OPEN METAL (OR WOOD) STUD FRAMING (BY OTHERS)

APPROVED 1/4-14 LOW-PROFILE FASTENERS, MAX. 16" O.C.; MUST FASTEN INTO STUDS, TYP. (BY OTHERS)

FILL ALL GAPS GREATER THAN 1/8" W/EXPANDING SPRAY FOAM

* ENSURE ALL EXPOSED INSULATION IS COVERED *

NOTE! GREENGIRTS AND CUSTOM-PROFILED RIGID INSULATION PANELS ARE PROVIDED FOR THIS PROJECT AS THERMALLY-BROKEN, CONTINUOUS INSULATION ONLY. CUSTOMER TO PROVIDE AND INSTALL CONTINUOUS AIR/WATER AND WEATHER BARRIER SYSTEM PER SPECIFICATIONS AND MANUFACTURER'S DIRECTIONS. CONSULT SMACNA AND ABAA FOR PROPER USE OF SEALANT. THIS INSTALLATION MAKES NO CLAIMS OR GUARANTEES ABOUT WEATHER TIGHTNESS, RESISTANCE OR PROTECTION.



SMARTci System

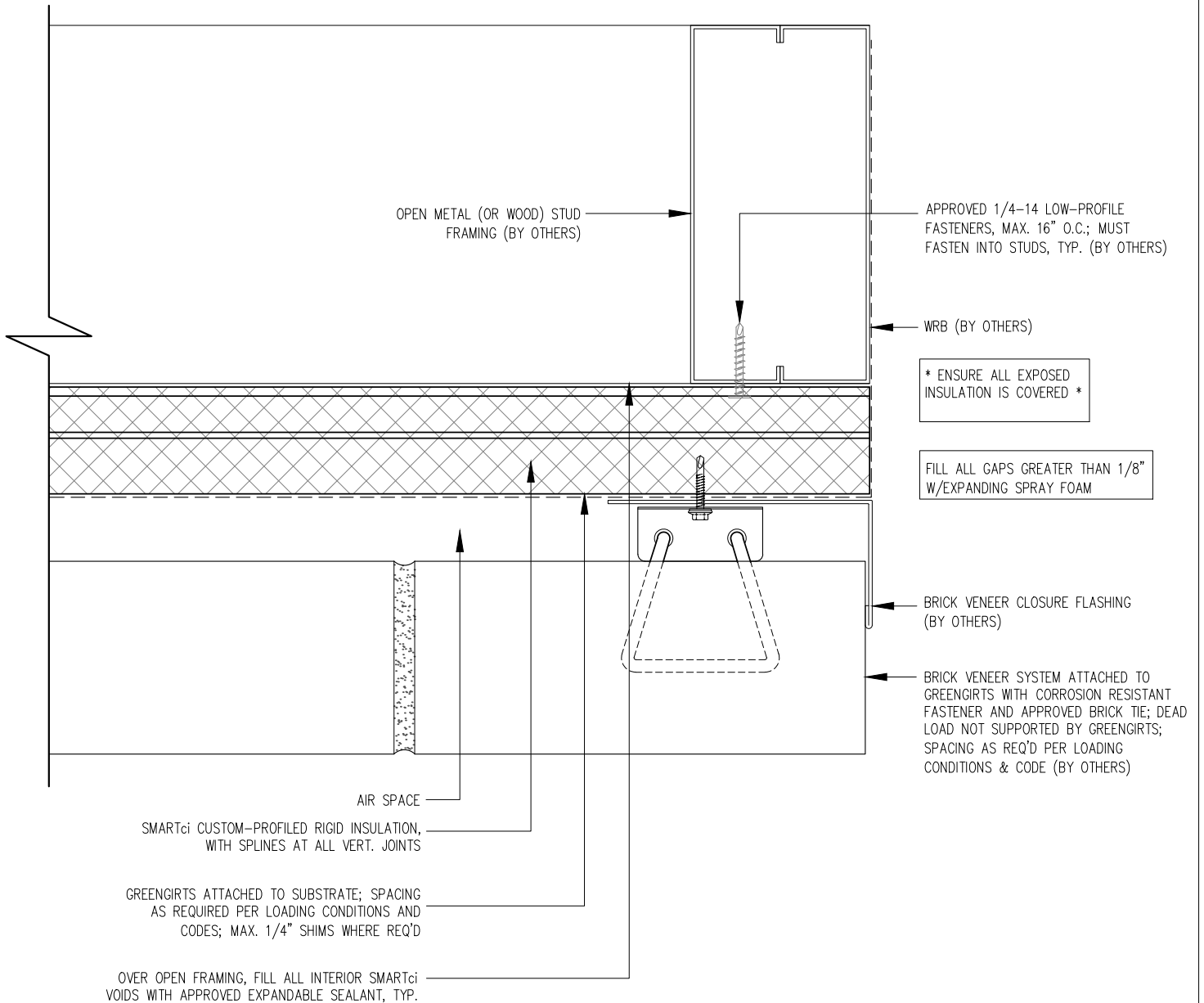
www.SMARTciSystems.com

1 (269) 355-1818

SUBSTRATE: OPEN FRAMING	SMARTci™ RIGID INSULATION PANEL
CLADDING: BRICK	DATE: 06-08-18
SIMPLE-Z SIZE: 200	GIRT ORIENTATION: HORIZONTAL

HEADER DETAIL

NOT TO SCALE



NOTE! GREENGIRTS AND CUSTOM-PROFILED RIGID INSULATION PANELS ARE PROVIDED FOR THIS PROJECT AS THERMALLY-BROKEN, CONTINUOUS INSULATION ONLY. CUSTOMER TO PROVIDE AND INSTALL CONTINUOUS AIR/WATER AND WEATHER BARRIER SYSTEM PER SPECIFICATIONS AND MANUFACTURER'S DIRECTIONS. CONSULT SMACNA AND ABAA FOR PROPER USE OF SEALANT. THIS INSTALLATION MAKES NO CLAIMS OR GUARANTEES ABOUT WEATHER TIGHTNESS, RESISTANCE OR PROTECTION.



SMARTci System

www.SMARTciSystems.com

1 (269) 355-1818

SUBSTRATE: OPEN FRAMING	SMARTci™ RIGID INSULATION PANEL
CLADDING: BRICK	DATE: 06-08-18
SIMPLE-Z SIZE: 200	GIRT ORIENTATION: HORIZONTAL

JAMB DETAIL

NOT TO SCALE



* ENSURE ALL EXPOSED INSULATION IS COVERED *

CUSTOM FIELD-CUT SMARTci RIGID INSULATION PANEL

RECOMMENDED: 1/4" x 1" BEAD OF SEALANT TO RETAIN STARTER PANELS @ 4' O.C., TYP.

GREENGIRTS ATTACHED TO SUBSTRATE; SPACING AS REQUIRED PER LOADING CONDITIONS AND CODES; MAX. 1/4" SHIMS WHERE REQ'D

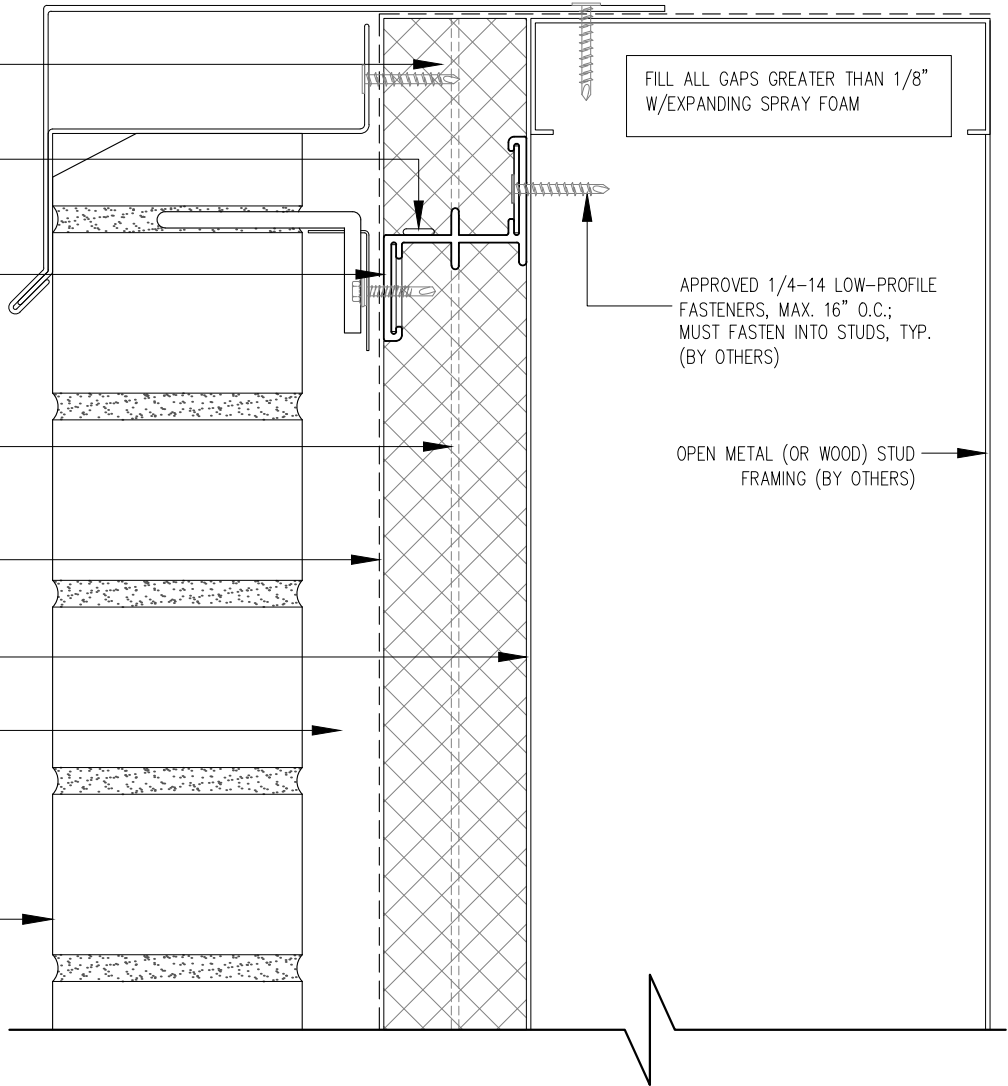
SMARTci CUSTOM-PROFILED RIGID INSULATION, WITH SPLINES AT ALL VERT. JOINTS

WRB (BY OTHERS)

OVER OPEN FRAMING, FILL ALL INTERIOR SMARTci VOIDS WITH APPROVED EXPANDABLE SEALANT, TYP.

AIR SPACE

BRICK VENEER SYSTEM ATTACHED TO GREENGIRTS WITH CORROSION RESISTANT FASTENER AND APPROVED BRICK TIE; DEAD LOAD NOT SUPPORTED BY GREENGIRTS; SPACING AS REQ'D PER LOADING CONDITIONS & CODE (BY OTHERS)



FILL ALL GAPS GREATER THAN 1/8" W/EXPANDING SPRAY FOAM

APPROVED 1/4-14 LOW-PROFILE FASTENERS, MAX. 16" O.C.; MUST FASTEN INTO STUDS, TYP. (BY OTHERS)

OPEN METAL (OR WOOD) STUD FRAMING (BY OTHERS)

NOTE! GREENGIRTS AND CUSTOM-PROFILED RIGID INSULATION PANELS ARE PROVIDED FOR THIS PROJECT AS THERMALLY-BROKEN, CONTINUOUS INSULATION ONLY. CUSTOMER TO PROVIDE AND INSTALL CONTINUOUS AIR/WATER AND WEATHER BARRIER SYSTEM PER SPECIFICATIONS AND MANUFACTURER'S DIRECTIONS. CONSULT SMACNA AND ABAA FOR PROPER USE OF SEALANT. THIS INSTALLATION MAKES NO CLAIMS OR GUARANTEES ABOUT WEATHER TIGHTNESS, RESISTANCE OR PROTECTION.



SMARTci System

www.SMARTciSystems.com

1 (269) 355-1818

SUBSTRATE: OPEN FRAMING

CLADDING: BRICK

SIMPLE-Z SIZE: 200

SMARTci™ RIGID INSULATION PANEL

DATE: 06-08-18

GIRT ORIENTATION: HORIZONTAL

SILL DETAIL

NOT TO SCALE